

Sample Ballot  
 Transylvania County, North Carolina  
 November 5, 2024

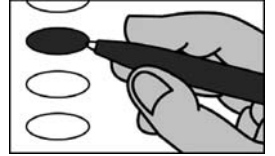
**B0001**



PCT: B1\_BREVARD 1

**BALLOT MARKING INSTRUCTIONS**

- A. With the marking device provided or a black ball point pen, completely fill in the oval to the left of each candidate or selection of your choice as shown.
- B. Where authorized, you may write in a candidate by filling in the oval and writing the name on the Write-in line.
- C. If you tear, deface or wrongly mark this ballot, return it to request a replacement.



PARTISAN ELECTIONS		NC Lieutenant Governor (You may vote for ONE)	NC Secretary of State (You may vote for ONE)
<b>President and Vice President of the United States</b> (You may vote for ONE)		<input type="radio"/> <b>Rachel Hunt</b> <i>Democratic Party</i> <input type="radio"/> <b>Wayne Jones</b> <i>Constitution Party</i> <input type="radio"/> <b>Hal Weatherman</b> <i>Republican Party</i> <input type="radio"/> <b>Shannon W. Bray</b> <i>Libertarian Party</i>	<input type="radio"/> <b>Elaine Marshall</b> <i>Democratic Party</i> <input type="radio"/> <b>Chad Brown</b> <i>Republican Party</i>
<input type="radio"/> <b>Kamala D. Harris</b> <b>Tim Walz</b> <i>Democratic Party</i> <input type="radio"/> <b>Robert F. Kennedy, Jr.</b> <b>Nicole Shanahan</b> <i>We the People Party</i> <input type="radio"/> <b>Chase Oliver</b> <b>Mike ter Maat</b> <i>Libertarian Party</i> <input type="radio"/> <b>Jill Stein</b> <b>Rudolph Ware</b> <i>Green Party</i> <input type="radio"/> <b>Randall Terry</b> <b>Stephen E. Broden</b> <i>Constitution Party</i> <input type="radio"/> <b>Donald J. Trump</b> <b>JD Vance</b> <i>Republican Party</i> <input type="radio"/> <b>Cornel West</b> <b>Melina Abdullah</b> <i>Justice for All Party</i> <input type="radio"/> _____ Write-in			
		NC Attorney General (You may vote for ONE)	NC Superintendent of Public Instruction (You may vote for ONE)
		<input type="radio"/> <b>Jeff Jackson</b> <i>Democratic Party</i> <input type="radio"/> <b>Dan Bishop</b> <i>Republican Party</i>	<input type="radio"/> <b>Maurice (Mo) Green</b> <i>Democratic Party</i> <input type="radio"/> <b>Michele Morrow</b> <i>Republican Party</i>
		<input type="radio"/> <b>Bob Drach</b> <i>Libertarian Party</i> <input type="radio"/> <b>Jessica Holmes</b> <i>Democratic Party</i> <input type="radio"/> <b>Dave Boliek</b> <i>Republican Party</i>	<input type="radio"/> <b>Wesley Harris</b> <i>Democratic Party</i> <input type="radio"/> <b>Brad Briner</b> <i>Republican Party</i>
<b>US House of Representatives District 11</b> (You may vote for ONE)		<input type="radio"/> <b>Sean Haugh</b> <i>Libertarian Party</i> <input type="radio"/> <b>Sarah Taber</b> <i>Democratic Party</i> <input type="radio"/> <b>Steve Troxler</b> <i>Republican Party</i>	<input type="radio"/> <b>Jefferson G. Griffin</b> <i>Republican Party</i> <input type="radio"/> <b>Allison Riggs</b> <i>Democratic Party</i>
<input type="radio"/> <b>Chuck Edwards</b> <i>Republican Party</i> <input type="radio"/> <b>Caleb Rudow</b> <i>Democratic Party</i>			
<b>NC Governor</b> (You may vote for ONE)		NC Commissioner of Insurance (You may vote for ONE)	NC Court of Appeals Judge Seat 12 (You may vote for ONE)
<input type="radio"/> <b>Mark Robinson</b> <i>Republican Party</i> <input type="radio"/> <b>Mike Ross</b> <i>Libertarian Party</i> <input type="radio"/> <b>Vinny Smith</b> <i>Constitution Party</i> <input type="radio"/> <b>Josh Stein</b> <i>Democratic Party</i> <input type="radio"/> <b>Wayne Turner</b> <i>Green Party</i>		<input type="radio"/> <b>Natasha Marcus</b> <i>Democratic Party</i> <input type="radio"/> <b>Mike Causey</b> <i>Republican Party</i>	<input type="radio"/> <b>Tom Murry</b> <i>Republican Party</i> <input type="radio"/> <b>Carolyn Jennings Thompson</b> <i>Democratic Party</i>
		<input type="radio"/> <b>Luke Farley</b> <i>Republican Party</i> <input type="radio"/> <b>Braxton Winston II</b> <i>Democratic Party</i>	<input type="radio"/> <b>Ed Eldred</b> <i>Democratic Party</i> <input type="radio"/> <b>Valerie Zachary</b> <i>Republican Party</i>

